



Your

Bainbridge Island

Peek at Real Estate



1108 Irene Place, BI

MLS#217402

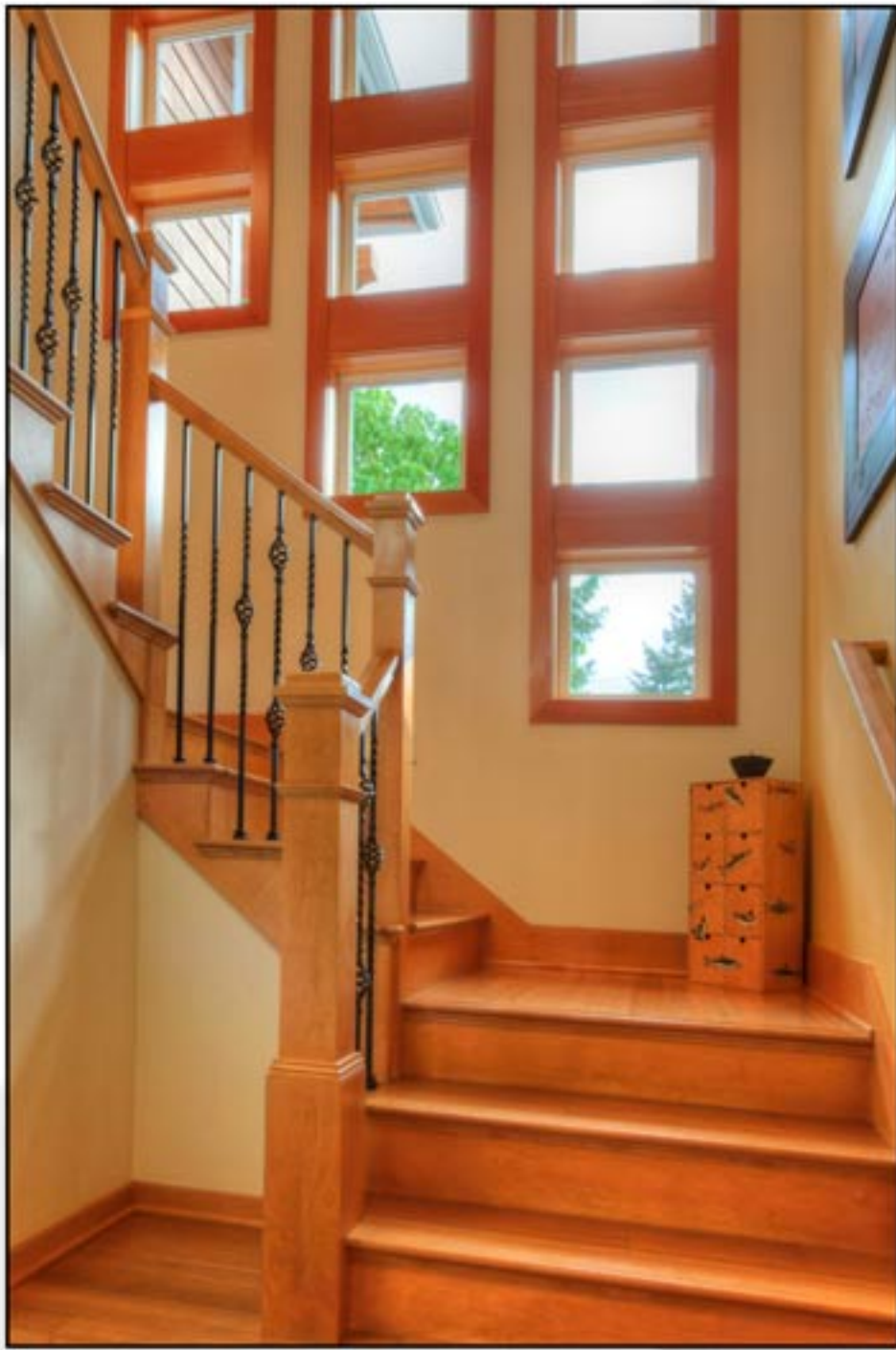
Offered at \$949,000

Jim Peek
(206) 817-5879

email: jpeek@windermere.com



Windermere
REAL ESTATE



Watch a ferry docking, finish your cup of coffee and stroll over in plenty of time to make the sailing. Enjoy casual elegant living in this custom designed, 2006 built home that overlooks Eagle Harbor with Mt. Rainier to the South. This spacious modern home is a rare find in Winslow that is perfect for a simple commute, entertaining guests and peaceful beach walks at a nearby park while still living just off the beaten path. Come see the view from the wide folding glass Nana wall and much more.



Directions: From Ferry and Highway 305, turn Rt (East) on Winslow Way, past Ferncliff, Left on Eagle Place & Rt on Irene. First home on left.



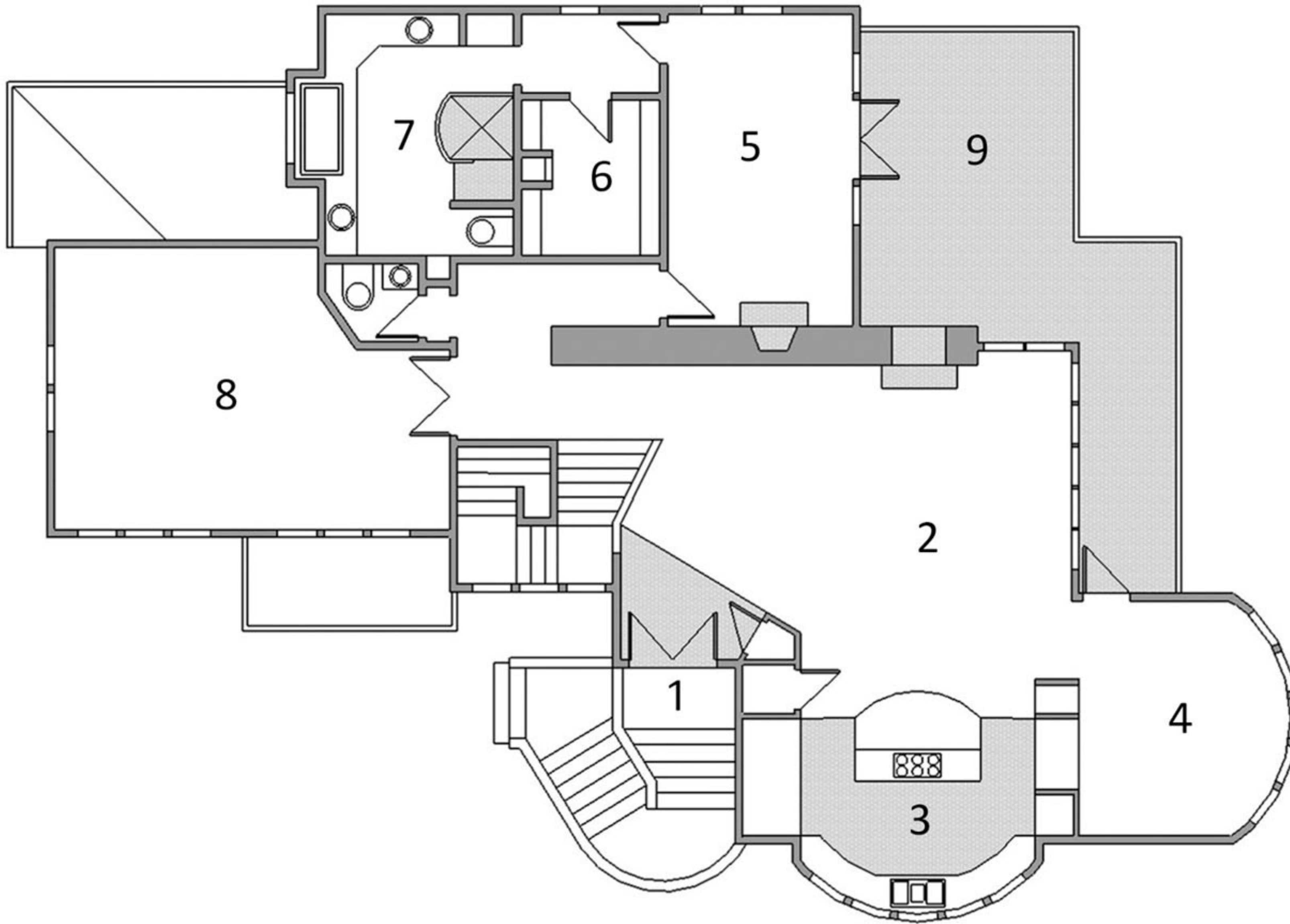
- Landscaped Garden with Raised Organic Beds
- Bamboo, Slate and Tile floors
- Mstr Bath Fireplace, Jacuzzi Tub & Heated Floor
- Large Office, 2 Car Garage, Wood Shop
- Professional Viking Kitchen Package
- Large Guest Suite with Walkin Closet & Patio
- 4,309 sf, 4 Bed, 3.5 Bath with Large Family Room
- Southside Patio with In/Outdoor Propane Frplc off the upper deck

JIM PEEK

WINDERMERE ~ BAINBRIDGE ISLAND

www.jimpeek.com

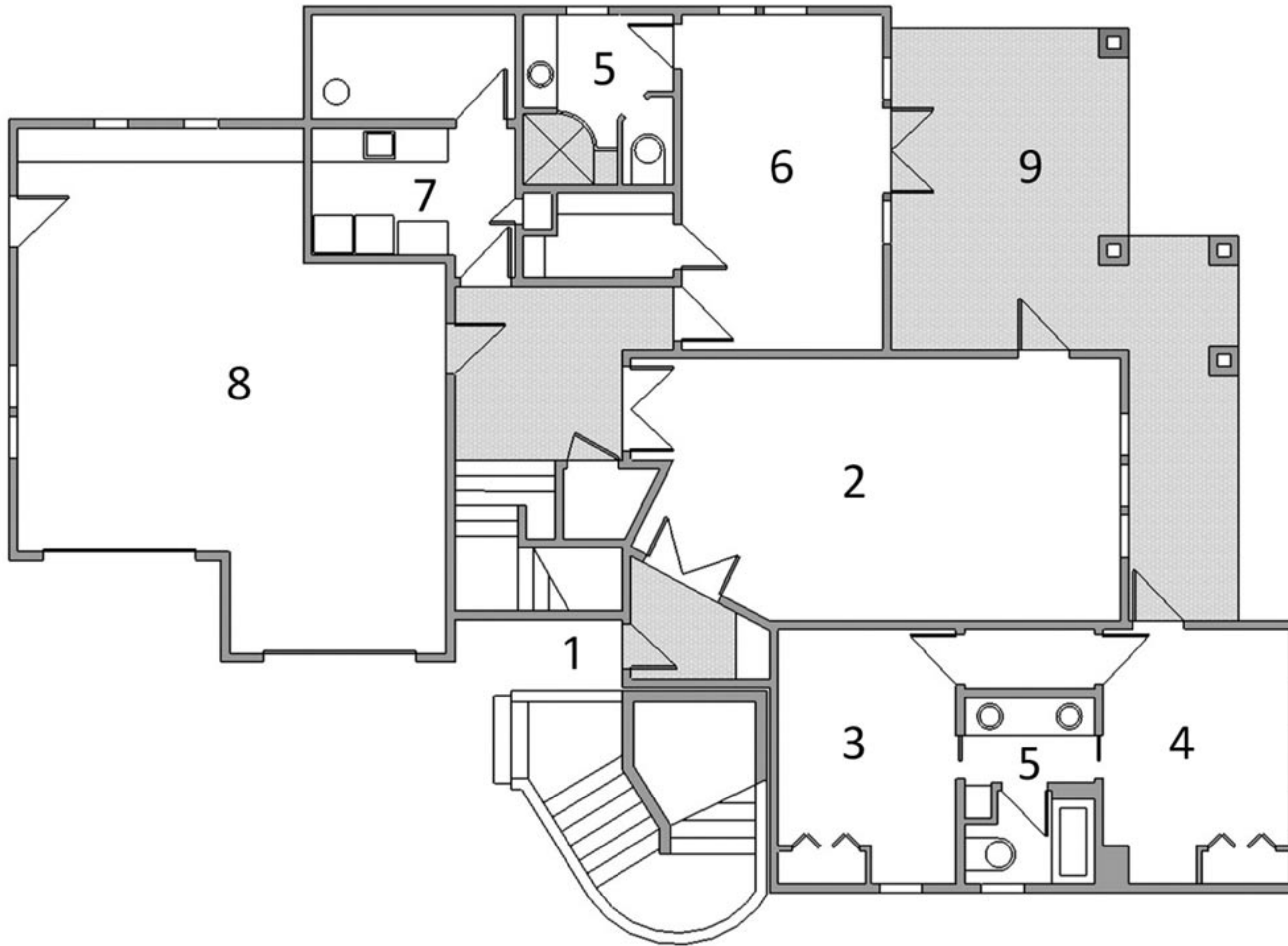
View photo gallery at www.jimpeek.com/Irene



- 1 Entry
- 2 Great Room 16x29
- 3 Kitchen 16x21
- 4 Dining 12x15
- 5 Bedroom 14x20
- 6 Closet
- 7 Bath
- 8 Office 18x24
- 9 Deck

2nd Floor

Total square footage per Kitsap County Records is 4,309 sf not including the garage. This plan is for illustrative purposes only and should be used as such by any prospective purchaser.



- 1 Entry
- 2 Media 16x29
- 3 Bedroom 10x13
- 4 Bedroom 11x13
- 5 Bath
- 6 Bedroom 12x20
- 7 Laundry / Utility
- 8 Garage
- 9 Porch

1st Floor

Total square footage per Kitsap County Records is 4,309 sf not including the garage. This plan is for illustrative purposes only and should be used as such by any prospective purchaser.