

# Welcome To The Neighborhood!

## *Bainbridge Island*



*Provided especially to the clients of ...*



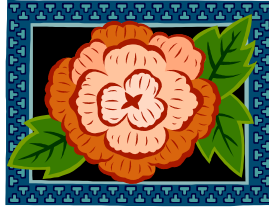
**PACIFIC NORTHWEST TITLE**

Silverdale: 360-692-4141  
Bainbridge Island: 206-842-2082  
Port Orchard: 360-895-7799

# TABLE OF CONTENTS

|  | Page      |
|--|-----------|
| <b>Welcome To Bainbridge Island -----</b>        | <b>2</b>  |
| Utilities -----                                  | 2         |
| Other Useful Numbers -----                       | 3         |
| <b>Household Hazardous Waste -----</b>           | <b>4</b>  |
| <b>Getting Around Kitsap County -----</b>        | <b>5</b>  |
| Hood Canal Bridge -----                          | 5         |
| Kitsap Transit -----                             | 5         |
| Bremerton - Kitsap Airporter, Inc -----          | 5         |
| Sea-Tac Airport -----                            | 5         |
| Bainbridge Island Ferry Terminal -----           | 5         |
| Bremerton Ferry Terminal -----                   | 6         |
| Kingston Ferry Terminal -----                    | 6         |
| Southworth Ferry Terminal -----                  | 6         |
| <b>Post Office Locations -----</b>               | <b>7</b>  |
| Bainbridge Island Main Office -----              | 7         |
| Other Post Office Locations -----                | 7         |
| <b>Bainbridge Island Schools -----</b>           | <b>9</b>  |
| Registering Your Child in School -----           | 10        |
| Bainbridge Island School District Calendar ----- | 11        |
| <b>Kitsap County Public Libraries -----</b>      | <b>13</b> |
| <b>Kitsap County Golf Courses -----</b>          | <b>14</b> |
| Other Kitsap Peninsula Golf Courses -----        | 15        |
| <b>Bainbridge Island and Beyond -----</b>        | <b>16</b> |
| Fabulous Museums in Kitsap County -----          | 16        |
| Bainbridge Island Area Parks -----               | 18        |
| <b>Kitsap Blue Jackets -----</b>                 | <b>21</b> |

# BAINBRIDGE ISLAND



This information is designed to help you get acquainted with your new surroundings.

**EMERGENCY SERVICES: Dial 911 for Police, Fire, and Medic 1 Emergencies**

## UTILITIES

### ***Sewer, Storm Drain, and Water Information:***

Bainbridge Island City Hall (206) 780-8624

Before You Dig  
Locating, Inc. (800) 424-5555

### ***Street Light Information:***

INTOLIGHT (877) 229-1235  
[www.IntoLight.com](http://www.IntoLight.com)

### ***Electricity:***

Puget Sound Energy  
[www.pse.com](http://www.pse.com) (800) 321-4123

### ***Garbage Service***

Outside City Limits (360) 674-3166

### ***Telephone:***

Qwest  
[www.qwest.com](http://www.qwest.com) (800) 244-1111

### ***TV Cable:***

Comcast Cable  
[www.comcast.com](http://www.comcast.com) (877) 824-2288

### ***Trash/Recycling:***

Bainbridge Disposal (206) 842-4882

### ***Natural Gas:***

Cascade Natural Gas  
[www.cngc.com](http://www.cngc.com) (800) 660-1403

### **Kitsap County Offices**

614 Division St.,  
Port Orchard, WA 98366  
[www.kitsapgov.com](http://www.kitsapgov.com) (206) 842-2061

Commissioner's (360) 337-7146

Assessor (360) 337-7160

Treasurer (360) 337-7135

Auditor (360) 337-7129

County Clerk (360) 337-7164

Community Dev. (360) 337-7181

Public Works Department (206) 842-2016

Courthouse Info (360) 337-7053

Health Department (360) 337-5235

### **Kitsap County Health District**

(360) 337-5235

### **Kitsap County Public Utility District:**

(800) 739-6766

## OTHER USEFUL INFORMATION

|   |                |  |                                  |
|---|----------------|--|----------------------------------|
| <b>BI Arts &amp; Crafts</b><br>www.bainbridgeartsandcrafts.org  | (206) 842-3132 | <b>BI Chamber of Commerce</b><br>www.bainbridgechamber.com   | (206) 842-3700                   |
| <b>Bainbridge Arts &amp; Humanities Council</b><br>221 Winslow Way West<br>www.artshum.org                                      | (206) 842-7901 | <b>BI Broadcasting Community Access Channel</b>  | (206) 780-2980                   |
| <b>BI Fire Department</b><br>www.bifd.org   | (206) 842-7686 | <b>BI Community Network</b>  | (206) 842-0236                   |
| <b>BI Helpline House</b><br>www.helplinehouse.org   | (206) 842-7621 | <b>Kitsap Transit</b><br>www.kitsaptransit.org   |                                  |
| <b>BI Historical Society</b>  | (206) 842-2773 | <b>Bus</b>   | (800) 501-7433                   |
| <b>BI Park District</b><br>www.biparks.org  | (206) 842-2306 | <b>Carpool/Ride Share</b>  | (800) 501-7433                   |
| <b>BI School District</b><br>www.bainbridge.wednet.edu  | (206) 842-4714 | <b>Kitsap Access</b>   | (800) 422-2877                   |
| <b>BI Senior Community Center</b><br>www.bainbridgeseniors.org  | (206) 842-1616 | ACCESS Service provides door-to-door or curb-to-curb transportation to the elderly and, unable to use the fixed route transit system to doctor's appointments, shopping, friends, or any other destination within Kitsap County. |                                  |
| <b>City of Bainbridge Island</b><br>280 Madison Avenue N.<br>Business Hours: Mon – Fri 8AM – 4PM<br>www.ci.bainbridge-isl.wa.us | (206) 842-2545 | <b>Newspapers</b>  |                                  |
| <b>Housing Resources Board</b><br>www.biccfy.org  | (206) 842-1909 | Bainbridge Review*   | (206) 842-6613                   |
| <b>Kitsap Community Resources</b><br>www.kcr.org  | (360) 478-2301 | www.bainbridgereview.com   |                                  |
| <b>Kitsap County Parks &amp; Recreation</b><br>1200 NW Fairgrounds Rd<br>Bremerton, WA 98311                                    | (360) 337-5350 | Central Kitsap Reporter*<br>Classifieds  | (360) 308-9161<br>(360) 692-7212 |
| <b>Kitsap Family YMCA</b><br>www.kfymca@silverlink.net  | (360) 377-3741 | Kitsap Business Journal*   | (360) 876-7900                   |
| <b>Kitsap Humane Society</b><br>www.kitsaphumane.org  | (800) 827-7387 | North Kitsap Herald*   | (360) 779-4464                   |
| <b>Kitsap Mental Health Services</b><br>5455 Almira Drive NE<br>Bremerton, WA98311  | (360) 373-503  | Port Orchard Independent*  | (360) 876-4414                   |
|   |                | Puget Sound Navy News*   | (360) 308-9161                   |
|   |                | The Sun  | (360) 377-3711                   |
|   |                | www.thesunlink.com   |                                  |
|   |                | Little Nickel Classifieds  | (800) 544-0505                   |
|   |                | *Share same number for Classifieds Dept.   |                                  |
|   |                | <b>Paratransit</b><br>www.paratransit.net  | (800) 756-5438                   |
|   |                | <b>Public Library</b><br>1270 Madison N.<br>www.krl.org  | (206) 842-4162                   |
|   |                | <b>Public Schools Emergency Communications</b><br>www.schoolreport.org   |                                  |
|   |                | <b>U.S. Postal Service (Main Branch)</b><br>271 Winslow Way E.<br>www.usps.com   | (800) 275-8777                   |
|   |                | <b>Washington State Department of Licensing</b><br>590 Winslow Way E.<br>www.dol.wa.gov  | (206) 780-5306                   |



# HOUSEHOLD HAZARDOUS WASTE



## Contact information

The facility is located across Highway 3 from Bremerton National Airport in the Olympic View Industrial Park.

8555 SW Imperial Way  
Port Orchard, WA 98367  
360-337-5777

## Hours

*Residential Customers*

Thursday - Wednesday, 10 am - 4 pm

Closed major holidays

*Business Customers*

By appointment ONLY

## Accepted Items

Bring household products with the words CAUTION, WARNING, DANGER, TOXIC, CORROSIVE, or FLAMMABLE on them to the facility for proper, safe management. For example:

- ◆ Automotive products
- ◆ Batteries
- ◆ Pesticides
- ◆ Sharps
- ◆ Pool/Spa chemicals

## Non-Accepted Items

- ◆ Ammunition/Explosives
- ◆ Asbestos
- ◆ Computer monitors/TVs
- ◆ Empty containers
- ◆ Propane tanks
- ◆ Radioactive waste
- ◆ Regular garbage



# GETTING AROUND KITSAP COUNTY



## **Hood Canal Bridge**

Information regarding closures and slowdowns (800) 419-9085

## **Washington State Ferries**

Information (888) 808-7977

Automated Info Line (800) 843-3779

[www.wsdot.wa.gov/ferries](http://www.wsdot.wa.gov/ferries)

## **Kitsap Transit**

Customer Service (360) 697-2877

Toll free (800) 501-7433

## **ACCESS (For elderly and disabled riders)**

(360) 479-7272, (800) 422-BUSS

Email [kitsapride@telebyte.com](mailto:kitsapride@telebyte.com)

## **Bremerton-Kitsap Airporter, Inc.**

24 hour Passenger Shuttle Services between Seattle-Tacoma International Airport and the Kitsap County Peninsula  
Pickup service from Bremerton, Silverdale, Port Orchard and surrounding areas.

(360) 876-1737, (800) 562-7948

fax (360) 876-5521

[www.kitsapairporter.com](http://www.kitsapairporter.com)

## **Sea-Tac Airport**

Information Line (800) 544-1965

## **Bainbridge Island Ferry Terminal**

### **Wait Time for Vehicles**

On Mondays, especially, the first three morning departures are extremely heavy with vehicle traffic and a 45-60 minute advance arrival is suggested for these sailings. For other peak sailings, through about 8:40 a.m., 45 minutes ahead is recommended. For non-peak travel, a minimum of 20 minutes ahead is suggested.

### **Directions to Terminal**

*Northbound on Highway 3:* Take the "Poulsbo, Bainbridge Island" exit. You must turn right off the exit ramp. Continue to follow this road for approximately 13 miles; it will take you straight to the ferry dock.

*Southbound from the Hood Canal Bridge:* Make a right turn coming off the bridge. After driving approximately 6 miles, you will come to the "Poulsbo, Bainbridge Island" exit. Exit at that point and follow the road for approximately 13 miles.

*Southbound from the Kingston area:* Follow the road from Kingston for about 5 miles until you come to a stoplight. (Valley Nursery and a Kitsap Transit bus parking lot will be off to the left.) Turn left and follow the road for about 12.5 miles to the ferry terminal.

### **Parking Information**

City and Diamond parking lots; disabled parking is available at the terminal.

## **Bremerton Ferry Terminal**

### **Wait Time for Vehicles**

The first three morning departures are the most heavily traveled. Vehicles are advised to arrive 30-45 minutes ahead of the sailing. In the afternoon the 3:50PM sailing can be busy and a 30-minute advance arrival would be suggested. For non-peak travel, a minimum of 20 minutes ahead is suggested.

### **Directions to Terminal**

*Northbound on Highway 3:* take the Kitsap Way exit. Turn right off the exit ramp. Drive 1.3 miles to 11th Street. Turn left at 11th and follow this street (it will eventually turn into Washington Street) to the ferry dock. (just under 2 miles).

*Southbound on Highway 3:* Take the Kitsap way exit (exit is also signed "BREMERTON, SEATTLE FERRY") Turn left off exit ramp. Drive 1.3 miles to 11th Street. Turn left at 11th and follow this street (it will eventually turn into Washington Street) to the ferry dock. (just under 2 miles).

### **Parking Information**

Parking on streets is metered and adjacent to the terminal, north and west, is a paid parking lot and garage.

## **Kingston Ferry Terminal**

### **Wait Time for Vehicles**

Peak traffic volumes occur from the first morning departure through about the 10:05 a.m. sailing. For this time period, a 30-45 minute advance arrival is recommended for vehicle traffic. For non-peak travel, a 20-minute advance arrival is recommended.

### **Directions to Terminal**

*From Port Angeles / Olympic Peninsula Points:* Drive EAST on U.S. 101 to State Route (SR) 104, crossing the Hood Canal Floating Bridge. Continue EAST on SR 104 for 8 more miles (through Port Gamble) to the Kingston Ferry Terminal.

*From Bremerton / Poulsbo:* Drive NORTH on State Route (SR) 3 and take SR 307 for 6 miles to the junction with SR 104. Continue EAST on SR 104 for 3 miles to the Kingston Ferry Terminal.

### **Parking Information**

Parking is available 2 blocks from terminal and two Park and Ride lots are available near the dock.

## **Southworth Ferry Terminal**

### **Wait Time for Vehicles**

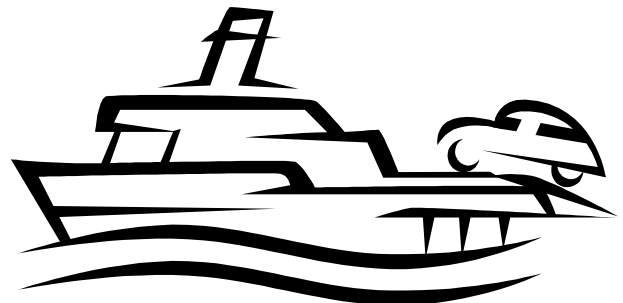
Commuters may anticipate the first six morning sailings to overload. It is advisable for motorists to arrive 30-45 minutes ahead of the scheduled departure time. For non-peak travel, a minimum of 20 minutes ahead of sailing is recommended. Loading for Vashon bound vehicles will stop 5 minutes prior to sailing.

### **Directions to Terminal**

*From I-5:* Take exit 132 and proceed west on Hwy 16 approximately 35 miles to Hwy 160 exit. Take Hwy 160 (Sedgwick road) exit, turn right onto Hwy 160 at stop sign and proceed approximately 7 miles to yet another stop sign. Turn right; ferry dock straight ahead. Parking is located to the right of terminal.

### **Parking Information**

Kitsap Transit handles adjacent pay parking; also Harper Church and a Park and Ride.



# POST OFFICE LOCATIONS

## Bainbridge Island Station

271 Winslow Way E.  
Bainbridge Island, WA 98110

### **Business Hours**

Mon – Fri 8:30 AM – 5:30 PM  
Sat 9:30 AM – 3:00 PM

### **Last Collection at Post Office**

Mon – Fri 5:15 PM  
Sat 3:15 PM

**Phone** (206) 855-9571  
TTY Service (877) 877-7833

**ON THE WEB** [WWW.USPS.COM](http://WWW.USPS.COM)



## **Other Post Office Locations**

### Hansville Main Office

38937 Hansville Road,  
Hansville, WA 98340

### **Business Hours**

Mon – Fri 8:00 AM – 12:30 PM  
1:30 PM – 5:00 PM

### **Last Collection at Post Office**

Mon – Fri 5:00 PM  
Sat 11:15 AM

**Phone** (360) 638-2460

### Kingston Main Office

10990 NE State Highway 104  
Kingston, WA 98346

### **Business Hours**

Mon – Fri 9:00 AM – 4:30 PM

### **Last Collection at Post Office**

Mon – Fri 4:30 PM

**Phone** (360) 297-3346

### Manchester

2325 Colchester Dr. SE  
Manchester, WA 98353

### **Business Hours**

Mon – Fri 8:30 AM – 12:00 PM  
1:00 PM – 5:00 PM

Sat 8:00 AM – 10:00 PM

### **Last Collection at Post Office**

Mon – Fri 5:00 PM  
Sat 10:00 PM

**Phone** (360) 871-0683

### Port Orchard Main Office

1125 Bethel Ave.  
Port Orchard, WA 98366

### **Business Hours**

Mon – Fri 8:30 AM – 5:00 PM  
Sat 9:30 AM – 1:00 PM

### **Last Collection at Post Office**

Mon – Fri 5:00 PM  
Sat 1:00 PM

**Phone** (360) 874-6875

**Poulsbo Main Office**

19240 Jensen Way NE  
Poulsbo, WA 98370

**Business Hours**

Mon – Fri 8:30 AM – 5:00 PM  
Sat 10:00 AM – 2:00 PM

**Last Collection at Post Office**

Mon – Fri 4:30 PM  
Sat 3:00 PM

**Phone** (360) 779-6784

**Silverdale Main Office**

10855 Silverdale Way NW  
Silverdale, WA 98383

**Business Hours**

Mon – Fri 8:30 AM – 5:00 PM  
Sat 9:00 AM – 2:00 PM

**Last Collection at Post Office**

Mon – Fri 5:00 PM  
Sat 12:00 PM

**Phone** (360) 308-0301

**Seabeck Main Office**

4691 Seabeck Holly Road NW  
Seabeck, WA 98380

**Business Hours**

Mon – Fri 8:30 AM – 4:30 PM

**Last Collection at Post Office**

Mon – Fri 4:30 PM  
Sat 12:30 PM

**Phone** (360) 830-5215

**South Colby Main Office**

9650 SE Southworth Drive  
South Colby, WA 98384

**Business Hours**

Mon – Fri 8:00 AM – 12:00 PM  
1:00 PM – 5:00 PM  
Sat 8:00 AM – 10:00 PM

**Last Collection at Post Office**

Mon – Sat 4:00 PM

**Phone** (360) 871-0311

**Sheridan Park Station**

1281 Sylvan Way  
Bremerton, WA 98310

**Business Hours**

Mon – Fri 9:00 AM – 5:00 PM  
Sat 10:00 AM – 2:00 PM

**Last Collection at Post Office**

Mon – Fri 5:00 PM  
Sat 2:30 PM

**Phone** (360) 377-0738

**Suquamish Main Office**

18485 Augusta Avenue  
Suquamish, WA 98392

**Business Hours**

Mon – Fri 8:30 AM – 5:00 PM  
Sat 10:30 AM – 12:00 PM

**Last Collection at Post Office**

Mon – Fri 5:00 PM  
Sat 4:30 PM

**Phone** (360) 598-4200



# **BAINBRIDGE ISLAND PUBLIC SCHOOLS**

8489 Madison Avenue NE  
Bainbridge Island, WA 98110  
Phone: (206) 842-4714 Fax: (206) 842-2928  
www.bainbridge.wednet.edu

## **Bainbridge Island High School**

9330 NE High School Road  
Bainbridge Island, WA 98110  
Phone (206) 842-2634  
Fax (206) 780-1260  
*Grades 9 – 12*

## **Woodward Middle School**

9125 Sportsman Club Road  
Bainbridge Island, WA 98110  
Phone (206) 842-4787  
*Grades 7 – 8*

## **Sonoji Sakai**

9343 NE Sportsman Club Road  
Bainbridge Island, WA 98110  
Phone (206) 780-6500  
Fax (206) 842-2928  
*Intermediate School*  
*Grades 5 – 6*

## **Blakely Elementary School**

4704 Blakely Avenue  
Bainbridge Island, WA 98110  
Phone (206) 842-4752  
Fax (206) 780-2040  
*Grades K – 5*

## **Ordway Elementary School**

8555 Madison Avenue North  
Bainbridge Island, WA 98110  
Phone (206) 842-7637  
Fax (206) 780-1075  
*Grades K - 4*

## **Wilkes Elementary**

12781 Madison Avenue NE  
Bainbridge Island, WA 98110  
Phone (206) 842-4411  
*Grades K - 4*

## **Commodore Options School**

9530 NE High School Road  
Bainbridge Island, WA 98110  
Phone (206) 780-1646  
Fax (206) 855-0511  
*Alternative Programs*



## **AREA PRIVATE SCHOOLS**

### **Madrona School**

105 Winslow Way West  
Bainbridge Island, WA 98110  
Phone (206) 855-8041  
Fax (206) 855-0668  
www.madronaschool.org

### **The Island School (K-5)**

8553 NE Day Road  
Bainbridge Island, WA 98110  
Phone (206) 842-0400  
www.islandschool.com

### **West Sound Academy of Arts & Academics**

P.O. Box 807  
Poulsbo, WA 98370  
Phone (360) 598-5954  
www.paaf.org

### **Silverwood School (1– 6)**

14000 Central Valley Road NW  
Poulsbo, WA 98370  
Phone (360) 697-7526

# REGISTERING YOUR CHILD IN SCHOOL

If you recently moved into the area, you can obtain information about which school your child will attend by calling (206) 842-4714. You can register your child by completing the forms available in that school's office. When you register, a copy of a recent report card, immunization record and verification of your current address (i.e. copy of recent mail sent to your address or the lease agreement) is needed.

To register a student for kindergarten a child must be five years old on or before August 31. A copy of your child's birth certificate and proof of immunization is required.

To enroll other students, proof of immunization is also required. The school will request records from the former school, but a child cannot attend school without a completed certificate of immunization status form on file in the school office. There are no registration fees.

## MINIMUM VACCINES REQUIRED FOR SCHOOL ATTENDANCE

There is no maximum interval between doses. Series does not need to be restarted.

### Washington State Department of Health--effective July 2006

| GRADE  | Varicella  | DtaP/DTP/DT/Td  | POLIO  | MMR   | HEP B               |
|--|--|---|--|---|---------------------|
| Kindergarten                                       | <b>1 dose</b> given on or after the 1 <sup>st</sup> birthday<br>OR<br>Parent reported history of the disease | <b>4 doses DTP/DTaP</b><br>Provided the last dose is given on or after the 4th birthday | <b>3 Doses Accepted,</b><br><b>4 Preferred,</b> provided the last dose is given on or after the 4th birthday | <b>2 Doses</b> provided it was given on or after the 1st birthday           | <b>3 Doses</b>      |
| Grade 1  | <b>Recommended,</b><br><b>Not Required</b>   | <b>3 Doses DT/Td</b><br>provided the last dose is given on or after the 4th birthday    | <b>3 Doses Accepted,</b><br><b>4 Preferred,</b> provided the last dose is given on or after the 4th birthday | <b>2 Doses MMR</b> both given after 1st birthday and at least 1 month apart | <b>3 Doses</b>      |
| Grades 2-5   | <b>Recommended,</b><br><b>Not Required</b>   | <b>3 Doses DT/Td</b><br>provided the last dose is given on or after the 4th birthday    | <b>3 Doses Accepted,</b><br><b>4 Preferred,</b> provided the last dose is given on or after the 4th birthday | <b>2 Doses MMR</b> both given after 1st birthday and at least 1 month apart | <b>3 Doses</b>      |
| Grade 6 or<br>Grades 7-12<br>(New to the District) | <b>Recommended,</b><br><b>Not Required</b>   | <b>3 Doses Dt/Td</b> provided the last dose is given on or after the 4th birthday       | <b>3 Doses Accepted,</b><br><b>4 Preferred,</b> provided the last dose is given on or after the 4th birthday | <b>2 Doses MMR</b> both given after 1st birthday and at least 1 month apart | <b>Not Required</b> |
| Grades 7 - 12                                      | <b>Recommended,</b><br><b>Not Required</b>   | <b>3 Doses Dt/Td</b> provided the last dose is given on or after the 4th birthday       | <b>3 Doses Accepted,</b><br><b>4 Preferred,</b> provided the last dose is given on or after the 4th birthday | <b>2 Doses MMR</b> both given after 1st birthday and at least 1 month apart | <b>Not Required</b> |

- ◆ **Children who are past 7th birthday should be given Td vaccine only. Fulfill this requirement with 3 doses of DTP/DTaP/DT, or Td, or a combination of the same.**
- ◆ **Laboratory evidence of immunity to measles, or mumps or rubella may be substituted for the MMR vaccine.**
- ◆ **Recommendation is for 2nd dose to be given 1 to 3 months after 1st; 3rd dose to be given 2 to 6 months after 2nd provided 3rd is not given less than 4 months after the first.**
- ◆ **Students who may have received one dose single antigen measles and 1 dose MMR are an exception. A 2nd MMR is recommended and preferred, but students can be considered fully immunized with 2 measles-containing vaccine**

# Bainbridge Island School District

## 2010-2011 Calendar

### August 2010

| Sun | Mon | Tue | Wed | Thu | Fri | Sat |
|-----|-----|-----|-----|-----|-----|-----|
|     |     |     |     |     |     |     |
| 1   | 2   | 3   | 4   | 5   | 6   | 7   |
| 8   | 9   | 10  | 11  | 12  | 13  | 14  |
| 15  | 16  | 17  | 18  | 19  | 20  | 21  |
| 22  | 23  | 24  | 25  | 26  | 27  | 28  |
| 29  | 30  | 31  |     |     |     |     |

### September 2010 21 days

| Sun | Mon | Tue | Wed | Thu | Fri | Sat |
|-----|-----|-----|-----|-----|-----|-----|
|     |     |     | 1   | 2   | 3   | 4   |
| 5   | 6   | 7   | 8   | 9   | 10  | 11  |
| 12  | 13  | 14  | 15  | 16  | 17  | 18  |
| 19  | 20  | 21  | 22  | 23  | 24  | 25  |
| 26  | 27  | 28  | 29  | 30  |     |     |

### October 2010 21 days

| Sun | Mon | Tue | Wed | Thu | Fri | Sat |
|-----|-----|-----|-----|-----|-----|-----|
|     |     |     |     |     | 1   | 2   |
| 3   | 4   | 5   | 6   | 7   | 8   | 9   |
| 10  | 11  | 12  | 13  | 14  | 15  | 16  |
| 17  | 18  | 19  | 20  | 21  | 22  | 23  |
| 24  | 25  | 26  | 27  | 28  | 29  | 30  |
| 31  |     |     |     |     |     |     |

### November 2010 18 days

| Sun | Mon | Tue | Wed | Thu | Fri | Sat |
|-----|-----|-----|-----|-----|-----|-----|
|     | 1   | 2   | 3   | 4   | 5   | 6   |
| 7   | 8   | 9   | 10  | 11  | 12  | 13  |
| 14  | 15  | 16  | 17  | 18  | 19  | 20  |
| 21  | 22  | 23  | 24  | 25  | 26  | 27  |
| 28  | 29  | 30  |     |     |     |     |

### December 2010 13 days

| Sun | Mon | Tue | Wed | Thu | Fri | Sat |
|-----|-----|-----|-----|-----|-----|-----|
|     |     |     | 1   | 2   | 3   | 4   |
| 5   | 6   | 7   | 8   | 9   | 10  | 11  |
| 12  | 13  | 14  | 15  | 16  | 17  | 18  |
| 19  | 20  | 21  | 22  | 23  | 24  | 25  |
| 26  | 27  | 28  | 29  | 30  | 31  |     |

### January 2011 20 days

| Sun | Mon | Tue | Wed | Thu | Fri | Sat |
|-----|-----|-----|-----|-----|-----|-----|
|     |     |     |     |     |     | 1   |
| 2   | 3   | 4   | 5   | 6   | 7   | 8   |
| 9   | 10  | 11  | 12  | 13  | 14  | 15  |
| 16  | 17  | 18  | 19  | 20  | 21  | 22  |
| 23  | 24  | 25  | 26  | 27  | 28  | 29  |
| 30  | 31  |     |     |     |     |     |

### February 2011 17 days

| Sun | Mon | Tue | Wed | Thu | Fri | Sat |
|-----|-----|-----|-----|-----|-----|-----|
|     |     | 1   | 2   | 3   | 4   | 5   |
| 6   | 7   | 8   | 9   | 10  | 11  | 12  |
| 13  | 14  | 15  | 16  | 17  | 18  | 19  |
| 20  | 21  | 22  | 23  | 24  | 25  | 26  |
| 27  | 28  |     |     |     |     |     |

### March 2011 19 days

| Sun | Mon | Tue | Wed | Thu | Fri | Sat |
|-----|-----|-----|-----|-----|-----|-----|
|     |     | 1   | 2   | 3   | 4   | 5   |
| 6   | 7   | 8   | 9   | 10  | 11  | 12  |
| 13  | 14  | 15  | 16  | 17  | 18  | 19  |
| 20  | 21  | 22  | 23  | 24  | 25  | 26  |
| 27  | 28  | 29  | 30  | 31  |     |     |

### April 2011 20 days

| Sun | Mon | Tue | Wed | Thu | Fri | Sat |
|-----|-----|-----|-----|-----|-----|-----|
|     |     |     |     |     | 1   | 2   |
| 3   | 4   | 5   | 6   | 7   | 8   | 9   |
| 10  | 11  | 12  | 13  | 14  | 15  | 16  |
| 17  | 18  | 19  | 20  | 21  | 22  | 23  |
| 24  | 25  | 26  | 27  | 28  | 29  | 30  |

### May 2011 21 days

| Sun | Mon | Tue | Wed | Thu | Fri | Sat |
|-----|-----|-----|-----|-----|-----|-----|
|     |     |     |     |     |     |     |
| 1   | 2   | 3   | 4   | 5   | 6   | 7   |
| 8   | 9   | 10  | 11  | 12  | 13  | 14  |
| 15  | 16  | 17  | 18  | 19  | 20  | 21  |
| 22  | 23  | 24  | 25  | 26  | 27  | 28  |
| 29  | 30  | 31  |     |     |     |     |

### June 2011 10 days

| Sun | Mon | Tue | Wed | Thu | Fri | Sat |
|-----|-----|-----|-----|-----|-----|-----|
|     |     |     | 1   | 2   | 3   | 4   |
| 5   | 6   | 7   | 8   | 9   | 10  | 11  |
| 12  | 13  | 14  | 15  | 16  | 17  | 18  |
| 19  | 20  | 21  | 22  | 23  | 24  | 25  |
| 26  | 27  | 28  | 29  | 30  |     |     |

### July 2011

| Sun | Mon | Tue | Wed | Thu | Fri | Sat |
|-----|-----|-----|-----|-----|-----|-----|
|     |     |     |     |     | 1   | 2   |
| 3   | 4   | 5   | 6   | 7   | 8   | 9   |
| 10  | 11  | 12  | 13  | 14  | 15  | 16  |
| 17  | 18  | 19  | 20  | 21  | 22  | 23  |
| 24  | 25  | 26  | 27  | 28  | 29  | 30  |
| 31  |     |     |     |     |     |     |

#### AUGUST

#### SEPTEMBER



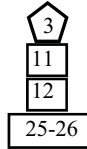
First Day of School  
 Holiday: Labor Day  
 Half-Day Early Dismissal

#### OCTOBER



Half-Day Early Release  
 No School for Gr. K-6: Parent Conferences

#### NOVEMBER



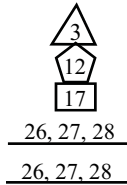
Half-Day Early Release  
 Holiday: Veterans' Day  
 No School -- Non-Contract Day  
 Holiday: Thanksgiving

#### DECEMBER



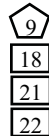
Half-Day Early Release  
 Winter Break

#### JANUARY



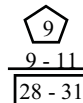
School Resumes  
 Half-Day Early Release  
 Holiday: MLK Birthday  
 No School for Gr. 5-8: Parent Conferences  
 Half-Days for High School: Final Exams

#### FEBRUARY



Half-Day Early Release  
 No School -- Non-Contract Day  
 Holiday: President's Day  
 No School -- Non-Contract Day

#### MARCH



Half-Day Early Dismissal  
 No School for Gr. K-4: Parent Conferences  
 Spring Break

#### APRIL



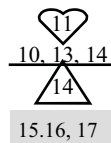
Spring Break  
 School Resumes  
 Half-Day Early Release

#### MAY



Half-Day Early Release  
 Holiday: Memorial Day

#### JUNE



High School Graduation  
 Half-Days for High School: Final Exams  
 Last School Day - Half Day  
 Reserved for snow days make-up



School Board Meetings

# KITSAP COUNTY PUBLIC LIBRARIES

## Hours and Locations

### **Bainbridge Island**

Phone (206) 842-4162

1270 Madison N.

Bainbridge Island, 98110

Mon-Thu 10:00am - 8:00pm

Fri-Sat 10:00am - 6:00pm

Sun 1:00pm - 5:00pm

### **Downtown Bremerton Library**

Phone (360) 377-3955

612 5th Street

Bremerton, 98337

Mon, Wed 1:00 pm - 8:00pm

Tue, Thu 10:00am - 5:00pm

Fri-Sat 1:00pm - 8:00pm

Sun Closed

### **Kingston Library**

Phone (360) 297-3330

Community Center

11212 State Hwy 104

Kingston, 98346

Mon, Wed 10:00am - 8:00pm

Tue, Thu 1:00pm - 8:00pm

Fri-Sat 1:00pm - 5:00pm

Sun Closed

### **Little Boston Library**

Phone (360) 297-2670

31980 Little Boston Road NE

Mail: 31912 Little Boston Road NE

Kingston, 98346

Mon, Wed 1:00pm - 8:00pm

Tue, Thu 10:00pm - 5:00pm

Fri-Sat 10:00am - 2:00pm

Sun Closed

### **Manchester Library**

Phone (360) 871-3921

8067 E. Main Street

P.O. Box 128

Manchester 98353

Mon, Fri 1:00pm - 5:00pm

Tue, Sat 10:00am - 5:00pm

Wed-Thu 1:00pm - 8:00pm

Sun Closed

### **Port Orchard Library**

Phone (360) 876-2224

87 Sidney Avenue

Port Orchard 98366

Mon-Thu 10:00am - 8:00pm

Fri-Sat 10:00am - 6:00pm

Sun 1:00pm - 5:00pm

### **Poulsbo Library**

Phone (360) 779-2915

700 NE Lincoln Street

Poulsbo 98370

Mon-Thu 10:00am - 8:00pm

Fri-Sat 10:00am - 6:00pm

Sun 1:00pm - 5:00pm

### **Silverdale Library**

Phone (360) 692-2779

3450 NW Carlton

Silverdale 98383

Mon, Wed 10:00am - 8:00pm

Tue, Thu, Fri, Sat 10:00am - 6:00pm

Sun Closed

### **Sylvan Way Library**

#### **Central Branch**

1301 Sylvan Way

Bremerton, WA 98310

Information Desk (360) 405-9100

Toll Free from

Bainbridge (206) 780-2102

N. Kitsap (360) 613-0758

Burley/Olalla (253) 857-3606

Check-out Desk (360) 405-9119

Outreach/Bookmobile (360) 405-9112

Young Peoples(360) 405-9110

Administration (360) 405-9158

Toll-free (877) 883-9900

Mon-Thu 10:00am - 8:00pm

Fri-Sat 10:00am - 6:00pm

Sun 1:00pm - 5:00pm



# KITSAP COUNTY GOLF COURSES

## **White Horse Golf Club**

9260 NE White Horse Drive, Kingston, WA 98346  
(360) 297-4468  
www.whitehorsegolf.com

- 18 holes
- 7093 yards
- Par 72
- 9 holes
- 5022 yards
- Par 36



## **Kitsap Golf and Country Club (Private)**

3885 Golf Club Hill Road, Bremerton, WA  
(360) 377-0166 – Play restricted to members and their guests.  
info@kitsapcc.com

- 18 holes
- 6,329 yards (back tees); 5,590 (women's tees)
- Par 71 (73 women)

## **Rolling Hills Golf Course**

2485 NE McWilliams Road, Bremerton, WA  
(360) 479-1212 - Reservations recommended seven days in advance.

- 18 holes
- 5,910 yards (men); 5,465 (women)
- Par 70

## **Meadowmeer Golf Course**

8530 Renny Lane, Bainbridge Island (Off Koura Road)  
(206-842-2218) - Some restrictions on public play; call in advance for reservations.

- 9 holes with 2 sets of tees
- 5,700 yards
- Par 72

## **Wing Point Golf & Country Club (Private)**

811 Cherry Avenue, Bainbridge Island  
(206-842-2688) - Play restricted to members and their guests  
www.wingpointgolf.com

- 18 holes
- Par 71 (72 women's)

## **Horseshoe Lake Golf Course**

1250 SW Clubhouse Court, Port Orchard, WA  
(800) 843-1564 - Reservations accepted up to one week in advance

www.hlgolf.com

- 18 holes
- 5,490 yards
- Par 71

## **McCormick Woods**

5155 McCormick Woods Drive SW, Port Orchard, WA  
(360) 895-0130 or (800) 323-0130 - Reservations accepted up to five days in advance starting at 9 a.m. daily.

www.mccormickwoodsgolf.com

- 18 holes
- 6,155 yards
- Par 72

## **Trophy Lake Golf Course & Casting**

3900 SW Lake Flora Road, Port Orchard, WA  
(360) 874-8337 - call to make reservations

www.trophylakegolf.com

- 18 holes
- 7,206 yards
- Par 72

## **Village Greens Golf Course**

2298 Fircrest Drive SE, Port Orchard, WA

(360) 871-1222 – Open play; call in advance for reservations.

- 18 holes (executive)
- 3,255 yards
- Par 58

## OTHER KITSAP PENINSULA GOLF COURSES

### **Alderbrook Golf & Yacht Club**

330 E. Country Club Drive

Union, WA

(888) 898-2560 - Reservations may be made, 7 days in advance for individual groups or 1 year for our tournament groups (16 or more players)

[www.alderbrookgolf.com](http://www.alderbrookgolf.com)

- 18 holes
- 6,338 yards
- Par 72

### **Bayshore Golf Course**

3800 E. Highway 3

Shelton, WA

(360) 426-1271

### **Port Ludlow Golf Club**

751 Highland Drive

Port Ludlow, WA

(877) 805-0868

(360) 437-0232

[www.portludlowresort.com](http://www.portludlowresort.com)



### **Gold Mountain Golf Course**

7263 W. Belfair Valley Road, Bremerton, WA

(360) 415-54322

[www.goldmt.com](http://www.goldmt.com)

- Cascade Course
  - 18 holes
  - 6,707 yards
  - Par 71
- Olympic Course
  - 18 holes
  - 7,073 yards
  - Par 72

### **Canterwood Golf & Country Club**

**(Private)**

12605 54<sup>th</sup> Avenue NW

Gig Harbor, WA

Pro Shop (253) 851-1745

Club House (253) 851-1845

### **Discovery Bay Golf Club**

7401 Cape George Road

Port Townsend, WA

(800) 385-8722



## Fun Family Adventures

### BAINBRIDGE ISLAND AND BEYOND

## And Fabulous Museums

*Information courtesy  
of Meredith Arseneau  
and Christina Rude's  
book*

*Great Adventures for  
Kitsap Peninsula:  
Family Fun in the  
West Sound, which is  
available from:  
Kitsapkids.com  
P.O. Box 133  
Silverdale WA 98383*

#### **Aurora Valentinetti Puppet Museum - Bremerton**

The museum is located at 249 Fourth Street, Bremerton, WA, and is open weekly Wednesdays through Saturdays from 11:00 am to 4:00 pm. Admission is FREE but donations are gladly accepted. For more information you can call (360) 373-2992.

#### **Under The Sea – Keyport Undersea Museum**

The Naval Undersea Museum is located outside Keyport gate. From Highway 3 take the Keyport exit (Highway 308). Just follow the signs to Naval Undersea Museum. The museum is open Wednesdays through Mondays from 10:00 a.m. to 4 p.m.. For more information (360) 697-1129. Admission is FREE but donations are gratefully accepted

#### **Bainbridge Historical Museum- Bainbridge Island**

The Bainbridge Island Historical Museum is located at 7650 NE High School Road. The museum is open Tuesday, Thursday and Sunday from 1:00 p.m. to 4:00 p.m., or you may schedule an appointment. For more information call (206) 842-2773. The museum asks a suggested donation of \$3.00 - adults, \$1.00 – children, and families - \$5.00.

#### **Two Treasures In Port Gamble**

The Port Gamble Store and the Of Sea and Shore Museum are located on Rainier Avenue in Port Gamble. Take Highway 3 north towards the Hood Canal Bridge. At the Bridge Highway 3 turns into Highway 104. Continue past the bridge (do not cross it) on Highway 104E. Port Gamble is about a mile farther. Watch for the museum signs. Port Gamble General Store is open September - March, daily, 8:00 am to 5:00 pm; April - August, daily, 7:00 am to 7:00 pm. For information call (360) 297-7636. Of Sea & Shore museum is open September - mid April, Saturday and Sunday, 11:00 am to 4:00 pm; April - August, seven days a week – 9:00 am to 5:00 pm. For more information call (360) 297-2426. Admission to the museum is FREE, but donations are accepted.

#### **Port Gamble Historical Museum - Port Gamble**

The Port Gamble Historic Museum is located on the downhill side of the General Store, facing the bay. Take Hwy 3 towards Hood Canal Bridge. At the Bridge, Hwy 3 turns into Hwy 104. Continue past the bridge, do not cross it) on Hwy 104 E. Port Gamble is about a mile farther. Watch for the museum signs. The museum is open 10:30 a.m. to 5:00 p.m. seven days a week from May 1 to October 31. Costs: Adults \$2.50, Students/Seniors \$1.50 and children under 6 are free. For more information call (360) 297-8074.

### **USS Turner Joy - Bremerton**

The USS Turner Joy (DD951) is located along the Bremerton waterfront. USS Turner Joy is open daily, May - October 1, 10:00 am to 5:00 p.m. with self-guided tours or guided tours with appointments. Tickets can be purchased at the Ships Store Gift shop on the Bremerton Boardwalk. Admission: Adults \$7.00, Children 5-12 \$5.00, and seniors \$6.00. Want to entertain but don't have enough room? The Turner Joy is available for memorable birthday or special occasion event. Ask about rental costs and group discounts. For information call (360) 792-2457.

### **Kitsap Historical Museum - Bremerton**

Kitsap Historical Museum is located in downtown Bremerton at 280 Fourth St. Take Highway 3 to Highway 303S/Waaga Way exit or 302 into downtown Bremerton. The museum is on Fourth a one-way Street. Parking is FREE but limited on the street. The museum is open daily 10 am -5 pm. Admission is FREE but donations are gladly accepted.

### **Sidney Art Gallery & Museum - Port Orchard**

The Sidney Art Gallery and Sidney Museum are located at 202 Sidney Avenue. From Highway 3 take Highway 16E (Port Orchard). Stay in your left lane and go towards the waterfront businesses. Turn right on Sidney. The museums are on the right. They are open Tuesdays through Saturdays from 11:00 a.m. to 4:00 p.m., Sundays 1:00 p.m. to 4:00 p.m., and closed on Mondays. For more information please call (360) 876-3693 or (360) 871-2237. Or you can check the website [www.portorchard.com](http://www.portorchard.com)

### **Naval Museum - Bremerton**

The Naval Museum is located along the Bremerton waterfront. Take Highway 3 to Highway 303S/Waaga Way exit toward Bremerton. Waaga Way turns into Wheaton Way, which turns into Warren Avenue. Cross the Warren Avenue Bridge, turn left on 11th Street. Follow 11th until it turns into Washington Street. The museum is on the left at 130 Washington Street. Parking is FREE along the street. The Naval Museum is open Monday – Saturday from 10:00 am to 5:00 pm; Sunday from 1:00 pm to 5:00 pm. More information is available at (360) 479-7447. Admission is FREE; donations are needed.

### **Log Cabin Museum -Port Orchard**

The Log Cabin Museum is located at 416 Sidney Avenue and is open Saturdays 11:00 a.m. to 4:00 p.m. and by appointment. Please call (360) 876-3693 or check the website [www.portorchard.com](http://www.portorchard.com) for more information. From Highway 3 take Highway 16E (Port Orchard). Stay in your left lane and go towards the waterfront businesses. Turn right on Sidney. The museums are on the right.

### **Phimister-Proctor Museum - Poulsbo**

Call to arrange a tour. The museum is open by appointment only for groups of 10-15, children 12 and older, please. Visit the website at [www.proctormuseum.com](http://www.proctormuseum.com) to learn more about Alexander Phimister Proctor. The Museum is located at 20201 Front Street NE in Poulsbo, behind Liberty Bay Auto. From Highway 3 take the Finn Hill exit. Turn right on Lindvig Way/Front Street and follow it down into Old Poulsbo. Turn right into the entrance to Liberty Bay Auto. Follow the road back behind the dealership. The Museum entrance is on the west corner of the building. Limited edition bronze sculptures and relief's are available. Tax-deductible donations are used to educate a broader audience about Proctor's life and work. For more information call (360) 697-4835 or (206) 842-6386.

# **BAINBRIDGE ISLAND AREA PARKS**

## **Battle Point Park**

90 acres. Picnic shelter, jogging trail, pond, soccer fields, tennis courts, softball fields, basketball courts, roller-hockey rink, community gardens, lawn play areas, and KidsUp! playground.

11299 Arrow Point Dr. NE

Closest cross streets are Arrow Point Drive & Frey Avenue.

## **Blakely Harbor**

40 acres. Former site of Port Blakely Mill, one of the world's largest sawmills in the late 1800's. This park will be developed for passive recreational use such as picnicking, kayaking, and wildlife viewing.

Closest cross streets are Blakely Avenue and 3-T Road.

## **Camp Yeomalt**

3 acres. Historic scout camp with a multi-purpose building used for art classes and scouting events.

900 Park Avenue NE.

Closest cross streets are Park Avenue and Yeomalt Point Dr.



## **Eagledale Park**

7 acres. Arts & crafts workshop, pottery studio, picnic shelter, tennis court and play area.

5055 Rose Avenue NE.

Closest cross streets are Rose Ave & Eagle Harbor Drive.

## **Fairy Dell Park**

Nature trail through forest to Puget Sound.

Battle Point Drive and Frey Road. Across Frey Road from the Battle Point Park Pond Parking Lot.

## **Gazzam Lake**

318 acres. Includes 14-acre lake, other wetlands, and trails, including eventual trail to the Sound; plus what will be an active-use area with interpretive center.

At end of Deerpath Lane or Marshall Road.

## **Gideon Park**

2.5 acres. A neighborhood park donated by heirs of the Kenneth H. Gideon family.

274 Gideon Lane.

Closest cross streets are Grow Avenue and Gideon Lane.

## **Grand Forest**

240 acres. Equestrian and walking trails.

Miller and Mandus Olson Roads.

## **Hidden Cove Park**

9.5 acres. One Little League ball field and a soccer practice area.

Phelps Road about 3/4 mile beyond the entrance to the Hidden Cove development.

Closest cross streets: Day Road and Phelps Road.

### **Island Center Hall**

3 acres. Includes an historic community hall and a picnic area.  
8395 Fletcher Bay Road.  
Closest cross streets are Fletcher Bay and High School Roads.

### **Manzanita Park**

120 acres. Hiking and equestrian trails.  
Miller Road and Day Road.

### **Meigs Park**

67 acres. Being developed for nature study and trails.  
Highway 305 and Koura Road.

### **Olson Park**

10 acres. Nature trail and picnic area.  
Closest cross streets are Madison Avenue and Roberts Road.

### **Point White Pier**

Historic former Mosquito fleet and ferry dock; now an ideal spot for fishing and scuba diving.  
On Point White Drive.

### **Rotary Park**

10 acres. Multi-purpose ball fields and children's play structure.  
969 Weaver Road.  
Closest cross streets are Wyatt Way and Weaver Road.

### **Sands Avenue Ball field**

10 acres. Full-size baseball and soccer fields.  
On Sands Avenue between High School Road and New Brooklyn.

### **Strawberry Hill**

18 acres. Softball fields, multi-purpose ball fields, playground, tennis courts, Mini-Gym, Park District Administrative Offices and Strawberry Hill Center.  
7666 NE High School Road.  
Closest cross streets are High School Road and Sands Road.

### **West Port Madison Nature Reserve**

13 acres. Nature trail and picnic shelter.  
8334 NE County Park Road.  
Closest cross streets are Skogen Lane and County Park Road.



# ORDER FORM

| QTY   | TITLE                                 | PRICE   | TOTAL |
|---|---------------------------------------|---------|-------|
|   | Great Adventures for Kitsap Peninsula | \$15.95 |       |
| Subtotal  |                                       |         |       |
| Add Sales Tax 8.6% (\$1.37)   |                                       |         |       |
| Shipping & Handling (Add \$2.00 for one book, 80c for each additional book) |                                       |         |       |
| Total enclosed  |                                       |         |       |

Your Name \_\_\_\_\_

Address \_\_\_\_\_

City \_\_\_\_\_ State/Zip \_\_\_\_\_

Daytime Phone \_\_\_\_\_

Email Address \_\_\_\_\_

Make Checks payable to:  
 KitsapKids.com  
 P. O. Box 133, Silverdale, WA 98383

# Kitsap BlueJackets



The Kitsap BlueJackets begin their third season in West Coast Collegiate Baseball League (WCCBL), the premier west coast summer baseball league that showcases top collegiate baseball talent. Many of the players on the BlueJackets and throughout the league have already been drafted by Major League Baseball teams.

Founded in 2004 by local Kitsap County businessmen and women, lead by general manager Rick Smith, the BlueJackets mission is to provide fun and affordable family entertainment and promote athletic competition. Promotional giveaways, fan contests, your favorite ballpark food and beverages, the team store, 'Jack the Mascot', player autographs and pictures are just a few of the fun and exciting things that occur at each Kitsap BlueJackets home game.

Starting in early June and running through early August, the WCCBL includes the Aloha Knights, Bellingham Bells, Bend Elks, Kelowna Falcons, Spokane Riverhawks and Wenatchee Applesox. In a format similar to major league baseball, each team comes to play at the Kitsap Fair and Events Center, home of the BlueJackets, for a two or three game series.

For more information and a game schedule, please visit the BlueJackets website at [www.kitsapbluejackets.com](http://www.kitsapbluejackets.com).